



**PASSING THE
LEAP 21 GEE
IN
SOCIAL STUDIES
SAMPLE PAGES**

**DR. FRANK J. PINTOZZI, Project Coordinator
DEVIN PINTOZZI
LAURA SILVERNALE
BRIAN FREEL**

**AMERICAN BOOK COMPANY
P O BOX 2638
WOODSTOCK, GEORGIA 30188-1383
TOLL FREE: 1 (888) 264-5877 PHONE: 770-928-2834 FAX: 770-928-7483**

TABLE OF CONTENTS

LOUISIANA SOCIAL STUDIES

PREFACE	vii
INTRODUCTION	viii
DIAGNOSTIC EXAM	1
EVALUATION CHART	14
CHAPTER 1: THE WORLD IN SPATIAL TERMS	15
Cardinal and Intermediate Directions	15
Reading a Grid Map	16
Degrees of Latitude and Longitude	17
Using a Map Scale to Find Distance	19
Reading a Physical Map	20
Reading a Political Map	21
Reading an Economic Map	22
Reading a Historical Map	23
Time Zones	24
A Global Perspective	25
Chapter 1 Review	26
CHAPTER 2: PLACES AND REGIONS	27
Types of Geography	27
Regions and Their Features	27
Physical Geography	29
Weather Patterns and Climate	31
Ecosystems	32
Effects of Physical Geography on Culture	32
Natural Resources Affect How Humans Live	35
Factors Affecting Interdependence Among Nations	36
Historic Events	37
Cultural Identity of Places and Regions	38
Chapter 2 Review	39
CHAPTER 3: ENVIRONMENT, SOCIETY, AND TECHNOLOGY	41
Environment	41
Society	42
Technology	43
Chapter 3 Review	46
CHAPTER 4: STRUCTURE AND PURPOSES OF GOVERNMENT	47
Structure and Purposes of Government	47
City Government	49
Parish Government	50
State Government	51
Federal Government	51
Domestic/Foreign Policy	53
Chapter 4 Review	56
CHAPTER 5: FOUNDATIONS OF THE U.S. POLITICAL SYSTEM	58
Historical Documents and Founding Philosophers	58
Compromises and Plans	60
Principles of U.S. Constitutional Government	61
Concepts	63
Political Process	64

Techniques of Persuasion and Propaganda	65
Chapter 5 Review	67
CHAPTER 6: INTERNATIONAL RELATIONSHIPS	68
International Agreements	68
Impact of U.S. Foreign Policy Positions on the World	70
Effects of International Events on the U.S.	73
Economic, Technological, and Cultural Influence of the U.S. on the World	74
Chapter 6 Review	77
CHAPTER 7: ROLES OF THE CITIZEN	78
Rights of the Citizen	78
Responsibilities of Citizens	80
Forms of Political Participation	81
Political Leadership and Public Service	82
Role of Patriotism in the Preservation of the U.S. Constitutional Democracy	83
Chapter 7 Review	84
CHAPTER 8: FUNDAMENTAL ECONOMIC CONCEPTS	85
Fundamental Economic Concepts	85
Principles of the Free Market	87
Labor and the Business Community	90
Chapter 8 Review	94
CHAPTER 9: INDIVIDUALS, HOUSEHOLDS, BUSINESSES, AND GOVERNMENT	95
Household and Business Economics	95
Government Actions and Interventions in the Market Economy	99
The Global Economy	102
Louisiana's Role in the National and World Economy	105
Chapter 9 Review	107
CHAPTER 10: THE ECONOMY AS A WHOLE	108
Understanding Economic Indicators	108
Fiscal Policy	112
Monetary Policies	113
Chapter 10 Review	117
CHAPTER 11: EXPANSION AND INDUSTRIALIZATION	118
The Railroads	118
Conflicts with Native American Nations	119
Important Indian Battles and Congressional Action	120
Important Developments Used in Continental Expansion	122
Farming in the 1870s and 1880s	123
The Populist Party and Labor Organizations	124
The Silver Question	124
The New South	125
Move to the Cities	126
Negative Aspects of Urbanization	126
Immigrants	129
Chapter 11 Review	130
CHAPTER 12: THE PROGRESSIVE MOVEMENT	132
Labor Unions	132
The Progressive Movement	133
Important Amendments to the Constitution	134
President Theodore Roosevelt	134
Election of 1912	135
Race Relations After Reconstruction	135
Chapter 12 Review	136

CHAPTER 13: THE UNITED STATES BECOMES A WORLD POWER	138
Imperialism	138
Imperialism and the United States 1850-1933	139
Long-Term Causes of World War I	142
Start of World War I	142
Battle Tactics and New Innovations	143
Causes of United States Involvement in World War I	143
Consequences of World War I	146
Post World War I Era - The League of Nations	147
Chapter 13 Review	147
CHAPTER 14: BOOM AND BUST: THE 1920s AND 1930s	149
Post World War I Culture - The Roaring Twenties	149
Poverty in the 1920s	150
Race Relations	151
Causes of the Great Depression	153
President Warren G. Harding	154
The Coolidge Years	155
President Hoover's Administration (1929-1932)	155
Roosevelt's New Deal	155
Economics	159
Chapter 14 Review	163
CHAPTER 15: WORLD WAR II	165
History and Economics	165
Political and Economic Upheaval After World War I	166
The Rise of Totalitarianism	168
Rejection of Peace	171
The United States Remains Neutral	173
Pearl Harbor - The U.S. Enters the War	175
On the Homefront	176
Turning the Tide	178
Germany's Defeat	179
The Holocaust	180
Japan's Defeat	181
Effects of World War II	182
Chapter 15 Review	183
CHAPTER 16: THE COLD WAR ERA	186
Looking for Peace and Justice	186
The Cold War in Europe	187
The Cold War in Asia	191
Comparison of U.S. Foreign Policy in Europe and Asia	194
The Fear of Communism and the McCarthy Era	194
The Atomic Arms Race and the Space Race	195
Hot Spots in the Cold War	196
Chapter 16 Review	198
CHAPTER 17: THE POWER OF PROTEST	200
World-Wide Unrest	200
Leaders of Independence Movements in Former European Colonies	200
The Emergence of the Third World	200
Revival of Old or the Creation of New Nations	201
Post-War Protest Movements in the United States	202
Feminist Movement	209
The Rise of a Counterculture in the United States	210
Chapter 17 Review	213

CHAPTER 18: CHALLENGES AND CONCERNS OF THE MODERN WORLD	215
The Global Environment	215
The Growth of Nuclear and Biological Weapons	216
Advances in Space Exploration and Technology	217
International Trade	217
Depletion of Natural Resources and Energy Supplies	218
Terrorism Worldwide	219
Human Rights Abuses	220
World Hunger	220
Population Growth	221
World Disease	221
Brave New World	222
Chapter 18 Review	222
CHAPTER 19: MODERN PRESIDENTS AND THEIR POLICIES	224
Chapter 19 Review	229
PRACTICE EXAM 1	231
PRACTICE EXAM 2	244
APPENDIX: ELECTRONIC RESOURCES	258

DIAGNOSTIC EXAM

Part A

1. **In 1904, New York City constructed the first subway providing rapid travel for the public. Why was the subway an advantage over other means of transportation?**
 - A. Subways did not interfere with other modes of traffic.
 - B. Subway fares were higher than public carriage fares.
 - C. Cities with subway systems enjoyed a rise in their property values.
 - D. Dilapidated buildings could be destroyed to make room for new subway systems.

2. **In 1887, Congress passed a law that broke up the tribal lands of the Native Americans. Each tribal leader and heads of households received individual plots of land from the government to farm. The Native Americans were not taught how to farm the soil, and many sold their lands to dishonest speculators. Which of the following is the correct name for this act of Congress?**
 - A. the Native American Act
 - B. the Dawes Act
 - C. the Indian Allocation Act
 - D. the Indian Reorganization Act

3. **Which of the following “robber barons” created a monopoly in the oil industry through the ownership of the Standard Oil Company?**
 - A. John D. Rockefeller
 - B. Andrew Carnegie
 - C. Cornelius Vanderbilt
 - D. William J. Bryan

4. **Alexander Graham Bell is noted for an invention known as**
 - A. the telegraph.
 - B. the radio.
 - C. the telephone.
 - D. the light bulb.

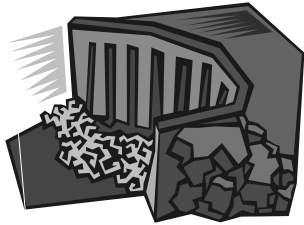
5. **In 1921, Congress passed the Emergency Quota Act. This act limited the number of immigrants to 350,000 a year and placed additional restrictions on immigration from Eastern Europe and Asia. Which of the following reasons explains why this act was passed?**
 - I. Workers in the United States feared wages would be forced down.
 - II. Many citizens were afraid of people who were not Protestant or who could not speak English.
 - III. There was no more room in this nation for people to live.
 - IV. Deadly viral epidemics were rapidly reducing the population of Europe and Asia.
 - A. I only
 - B. I, II, and III
 - C. I and II
 - D. IV only

Circumstances often motivate people to relocate to a different area hoping for a better living situation or a better job. A high **population density** develops due to **population growth** as more people move into that urban region, and eventually **urban sprawl** results. Urban sprawl is the overflow of a city's high population spilling over surrounding areas without a plan or structure. The rapid new construction includes homes, apartments, schools, and shopping centers, causing road systems and residential areas to be poorly developed. **Suburbs** have been created in an attempt to get people to spread out in an orderly fashion around the urban area instead of just within it.

Internal migration affects many demographic factors. Two of these factors are the income level of the individual and the economic growth (or stagnation) of a particular region. As people relocate from one area to another in search of better living standards and job opportunities, the individual person's income level may increase. Also, if a significant number of people are migrating into a particular area, it is generally because of an increase in business and industry within that given area, resulting in good economic growth in that region. This can also have adverse economic consequences in the region they have left.

TECHNOLOGY

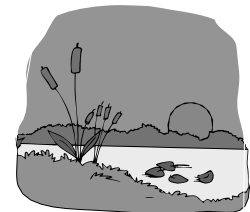
Certain **technological advances** have played an important role in the overall development of many societies. In societies afflicted with unfavorable climatic conditions, such as floods, hurricanes, or droughts, the benefits of technology may help avoid potential problems associated with natural climatic disasters. Other challenging environmental issues, which benefit from technology, are limited natural resources, geographical isolation, and decision in land use.



Flooding often batters and damages the land and structures of towns and cities in areas of high water levels (oceans, rivers, lakes, etc.). Soil erosion is one of the major damaging effects of floods. Solutions to soil erosion involve the building of **dams**, **flood levees**, and **sea walls**. To prevent the destruction caused by earthquakes, engineers design buildings to withstand the earth tremors. Buildings now sway with the tremors, making them more resistant to collapse.

Other engineering feats that help overcome environmental challenges include the ability to build **bridges** across vast expanses of water. Demolition teams blast **tunnels** through mountain ranges and immense rock formations rather than building over and around them. Engineers cut **canals** through landmasses to enable ships to move more directly from one body of water to another. These massive efforts are examples of how humans adapt and modify their physical environment to better suit their needs.

The people of **New Orleans** are faced with an environmental challenge that will require adaptation and modification. Specifically, the concern is the ever-changing, inward movement of water onto the Mississippi delta. As the incoming water is increasing the surface area of the Gulf of Mexico, it is also diminishing the coastal wetlands, home to a diversity of wildlife. The wetlands provide nesting grounds for various bird species and a land stopover for migratory birds.



Water level changes affecting New Orleans and the surrounding coastal areas have appeared for a variety of reasons. New Orleans is eight feet below sea level and has no natural

Practice 2: City Government

True or False.

1. **T F** The mayor council decides all community issues without the public's knowledge.
2. **T F** A city manager is elected and only handles building roadways.
3. **T F** The purpose of a commission plan is to give an overview of what goals to set.

PARISH GOVERNMENT

The level of government called a “parish” is unique to the state of Louisiana. A **parish** in Louisiana is the same thing as a “county” is in other states. Basically, it refers to boundaries on a map separating towns, cities, or districts. This helps to break up the larger parts of each state into smaller groups, so each can be governed locally. Each parish may have a different idea or way that it wants to govern itself, so it helps to have smaller local governments within each state. In this way, the residents of that particular parish can run their government directly and have a greater voice in their community. Within a parish, there are people who are appointed, hired, or elected to do a particular job.

There is a **district attorney** (or D.A.) who works for a community and represents the government in bringing cases to trial. There is a **district court** which hears the trial cases. Within the district court is the **clerk of court** whose responsibilities include assisting with the parish's district court's organizational needs, as well as recording important documents like deeds and mortgages. The clerk of court's job might also include acting as the chief election officer of the parish.



The **sheriff's office** contains the main law enforcement team within a parish and provides community service programs. When necessary, the staff of the sheriff's office also books criminals, serves subpoenas, provides security for the District Court, and supervises inmate programs. Each parish has a **coroner** who is a medical examiner the city hires to present “cause of death” evidence in cases of death due to unnatural causes. Another important position is that of the **assessor** whose main job is to generate revenue for the parish by taxing real estate and other properties belonging to the people who live there. There is a **precinct** in each parish that defines the voter registration areas and districts. A **parish seat** is a representative position on the city council. The purpose of the city council is for the local population, through a representative, to take a stand on an issue and to help promote change in their community.

Practice 3: Parish Government

Fill in the missing word in each sentence below.

1. The job of the _____ is to hear cases presented before it.
2. The clerk of court's job is to _____.
3. A person can serve on the city council in Louisiana by being elected to a _____ in the local government.
4. To help with getting revenue for a parish the _____ places taxes on property.
5. The office of _____ is charged with handling criminals and to put together community programs.

Practice 1: Fundamental Economic Concepts

On a separate sheet of paper, answer the questions below.

1. How does a person's choice relate to his or her opportunity cost?
2. What is the purpose of incentives?
3. How are natural resources related to capital resources?
4. Describe the channels of distribution of a bicycle manufacturer.

Matching

- | | |
|----------------------|--|
| 5. trade-offs | A. those who want to use a good or service |
| 6. capital resources | B. examples of these include machines, warehouses, and factories |
| 7. consumers | C. positive outcomes received from the use of a good or service |
| 8. benefits | D. consequences of making one decision or another |

PRINCIPLES OF THE FREE MARKET

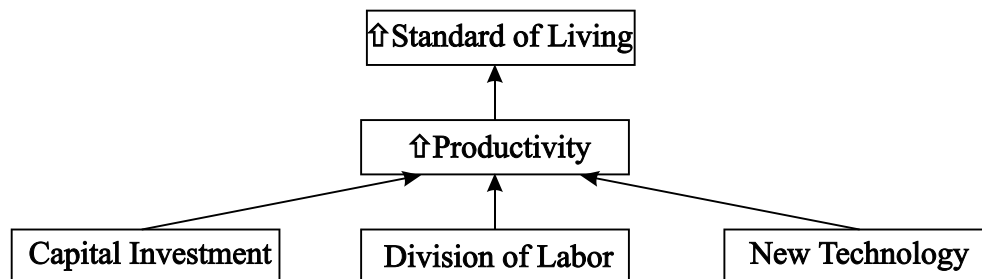
Economists use many important terms to describe how the free market works. These include productivity, standard of living, self-interest, profit, and forms of exchange.

Three conditions play a role in increasing the productivity of any supplier.

- As **capital investment** increases, the supplier can purchase more equipment and more labor in order to increase output. Capital investment is the amount of money put into a business for company operations.
- Suppliers can use **division of labor** to increase the efficiency of an operation. Division of labor is the subdividing of a production process into smaller specific tasks. For example, in a book manufacturing facility, one person makes the copies, another person binds, and a third person trims the book. By dividing the tasks, more books can be produced in the same amount of time.
- As an industry takes on **new technology** (increased knowledge on how to more efficiently produce goods and services), businesses are able to increase their output of product at a lower cost.

Productivity and Standard of Living

Higher **productivity**, meaning the output of goods that comes from the use of one unit of production, leads to a higher **standard of living**. The standard of living of a nation is a measure of how people in a nation live overall when compared to what they desire. The rate of economic growth is directly related to the growth of both capital and of labor.



ships carrying agricultural and industrial products down the Mississippi River and for those ships carrying imports up from the Gulf of Mexico. The port of New Orleans, currently the second largest port in the nation, serves as the connection between grain moving down from the Midwest and petroleum from coastal wells and from the Middle East. A second large port, Baton Rouge, is located at the beginning of deep channel shipping on the Mississippi. Third, the Intracoastal Waterway runs the entire length of the Gulf coast, providing yet another method of shipping between several Southeastern states.

Tourism

Starting from both the French and the Spanish influence in this region, Louisiana and, in particular, New Orleans, adopted and maintained a festival called *Mardi Gras*, which is a celebration lasting two weeks and ending at the beginning of Lent on the Catholic calendar.

However, the holiday quickly turned from its religious significance to a colorful celebration that today draws hundreds of thousands of people from across the nation. This one event is a major boost for

tourism in and around the city of New Orleans. Other important sources of tourism are the many *antebellum plantations, museums, and gardens* which dot the state. A third major source of tourism is the New Orleans Superdome stadium, which often hosts large-scale sporting events such as the Cotton Bowl and the Superbowl.



The Petroleum Industry

Louisiana is the only state in the continental United States which supports drilling in the Gulf of Mexico. These wells provide a large amount of *oil* and *natural gas* for consumption in the United States. In addition, because New Orleans is a major transportation hub and port, companies have built a massive infrastructure of pipes underground which send petroleum products from New Orleans to cities throughout the Southeast. Louisiana also serves as a vital center for the importing, producing, and refining of crude oil and natural gas. The petroleum industry employs and supports literally tens of thousands of jobs in Louisiana and is a vital link for fossil fuel supplies in the national economy.



THE POPULIST PARTY AND LABOR ORGANIZATIONS

Reformers and farmers joined together to form a third party in 1892 called the **Populist Party**. For the presidential election that year, the party nominated two Civil War generals to run on the platform formulated at Ocala. Although the party did not win the presidential election, it received over one million popular votes. The Populists looked well poised to be a major contender for the 1896 elections, but by 1897, the party had disappeared completely. The Republicans and Democrats adopted portions of the Populist platform.

In the 1920s, the **labor movement** expanded as industrialization increased because it revolved around the struggles concerning the working population and their rights. The factory workers became increasingly upset with the lack of job security, poor working conditions, and low pay for expectations of high productivity. As a result, laborers organized into groups and formed unions to improve working conditions. **Samuel Gompers** was a well-known labour leader in the late 1800s who helped form the American Federation of Labor organization (AFL). He believed in trying to divert strikes and make unionization respectable by putting trade agreements in writing. He also believed that national organizations should have primary authority over local unions or international affiliates.

Eugene Victor Debs was also a union leader and a political activist in the late 1800s. He had worked as a fireman on a railroad and eventually became a charter member of the Brotherhood of Locomotive Firemen. In 1893, he organized an industrial union called the American Railway Union. In the early 1900's, Debs ran for the office of president on multiple occasions. He campaigned for and represented the *Socialist Party*. He was arrested and jailed in 1918 after being convicted of espionage for speaking against and protesting World War I.

Thomas Nast was an influential journalist and cartoonist during the mid to late 1800s. He wrote and drew satirical cartoons for *Harper's Weekly* during the Civil War era. He was noted for arousing the spirit of patriotism in addition to supporting the civil rights of black citizens. He would draw caricatures of famous people when he disagreed with their political, business, or social views. Nast was also responsible for exposing the corrupt New York City politician, William Tweed. Nast supported Ulysses Grant's and Grover Cleveland's presidential campaigns. Each won the presidency and Nast became known as the "presidential maker" since the viewpoint he displayed through his cartoons and his writings was so powerful. In the 1880s, he published negative material about the Catholic church and trade unions. These campaigns were not very popular with the readers of *Harper's Weekly*, however, and he left the publication in 1886 to begin his own journal.

THE SILVER QUESTION

President Grover Cleveland (1837-1908) faced a full scale depression in the United States economy during the first year of his term in 1893. The stock market had fallen, 500 banks had failed, and 1,500 businesses had gone bankrupt. Cleveland believed the cause of the depression was the use of the silver standard established in 1890. He believed that the use of a **gold standard** (currency based on gold) was a necessity to a healthy economy. In 1893, Cleveland repealed the Sherman Silver Purchase Act and returned the nation to a purely gold standard. However, the depression continued after this change was implemented.

As the depression deepened in 1894, more and more people blamed Cleveland's new policy for the worsening conditions. When the Democratic Party met in 1896, it was divided. The eastern Democrats supported Cleveland. However, the southern and western Democrats supported a fiery speaker named **William Jennings Bryan (1860-1925)**. Bryan led his faction in decrying the use of the gold standard and backed a return to unlimited coinage of silver to spur

Two of the most notable women involved in this movement were Susan B. Anthony and Elizabeth Cady Stanton. **Carrie Chapman Catt** was also a forerunner of the suffrage movement since she was a key political strategist from the 1880s. She was actively involved through her writing and speaking engagements for the National American Woman Suffrage Association and, in 1902, helped to organize the International Woman Suffrage Alliance. After the 19th Amendment was passed, she founded a new League of Women Voters and served as its honorary president until her death in 1947.

Jane Addams is a notable person best remembered as the “Mother of Social Work”. Her work in the suffrage movement came from an appeal that women would be better able to perform duties as wife and mother if they were granted the right to vote. She argued this point in a pamphlet entitled “Why Women Should Vote.” Addams explained that if women were voters, situations such as unsanitary conditions regarding living environments and food supplies would not exist because women would vote on legislation to fix the problems. She also authored 11 books, and she co-founded the National Association for the Advancement of Colored People and the American Civil Liberties Union. Addams vision of helping poor people was her lifetime goal. She accomplished this goal through her founding of the Hull House, a facility established for disadvantaged youths in Chicago.

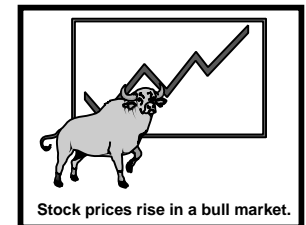
CAUSES OF THE GREAT DEPRESSION

Disparity of Income

Throughout the Roaring 1920s, a select group of businessmen and professionals made large sums of money. However, the wages of their workers did not increase as fast as the price of the goods purchased. Businesses and farms produced a surplus of goods. At the same time, consumer spending on these goods steadily dropped. The government did not publish statistics on consumer spending, so few understood that the economy was slowing down.

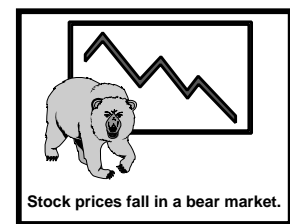
The 1920s Economy

Many people made fortunes in the 1920s economy. Other people lived in deep poverty. Many people found work in the growing automobile and appliance industries. However, workers in these businesses did not receive wages that kept pace with the increases in the cost of living. Farmers found themselves deeper in debt during this decade. In addition, blacks had a very difficult time finding work of any sort during this time. Latinos from Mexico worked as migrant workers, taking part-time work needed seasonally and receiving low wages for their work. The majority of them lived in slums. Other people made fortunes investing in the stock market.



Stock Market Speculation

During the 1920s, the United States experienced a strong **bull market** (a market where stock prices are rising). Investors became accustomed to buying their stocks on margin, meaning purchasing stock for as little as 10% down. They borrowed the rest of the money from brokers and experienced huge profits when their stocks rose in value. When the **stock market crashed on October 29, 1929**, stock prices fell, and the majority of investors tried to sell all of their investments. Most investors received pennies on the dollar for their stocks. Others lost all of their money in stocks.



CHAPTER 18

CHALLENGES AND CONCERNS OF THE MODERN WORLD

THE GLOBAL ENVIRONMENT

As industrialization has increased worldwide, so have the problems associated with this growth - air pollution, acid rain, habitat loss, water contamination (1.5 billion people lack safe drinking water), and species loss (between 4,000 and 50,000 species are dying out each year). Because the pollution produced in one nation often affects another, international organizations such as **United Nations Environmental Program**

(**UNEP**) and political parties such as the **Green Party** have formed to regulate and combat these unhealthy aspects of industrialization. As the developing countries of East Asia, Latin America, and Africa continue the process of industrialization, international organizations are imposing tighter safeguards through agreements to ensure that levels of toxic air emissions and habitat destruction of endangered species are minimized. However, problems such as increased **global warming** (global temperature has increased 1 degree Celsius within the last century), the depletion of the **ozone layer** (holes in the ozone layer have been expanding at the north and south poles) and the **extinction** of increased numbers of species, both plants and animals, continue to cause concern for people around the world.



The United States has been a source of both negative environmental practices and positive activism for the good of the global environment. **Environmentalism** arose as a social and political movement in the 1960s and continues to influence national environmental policies. The size and reach of the United States demand that it addresses the worldwide effects of its wasteful practices. Organizations within the United States dedicated to worldwide ecological conservation include **Greenpeace** (organization committed to ensuring that corporations follow ecologically sound practices, sometimes using civil disobedience) and the **Sierra Club** (group sponsoring talks, exhibitions, and environmental activism in local communities). Other organizations began their activities toward the end of the 20th century. They include the **Environmental Defense Fund** in 1967, **Friends of the Earth** in 1968, the **Natural Resources Defense Council** in 1970, and the **Sierra Club Legal Defense Fund** in 1971. All of these groups work to educate people and raise awareness about environmental issues and promote political change to protect the global environment.

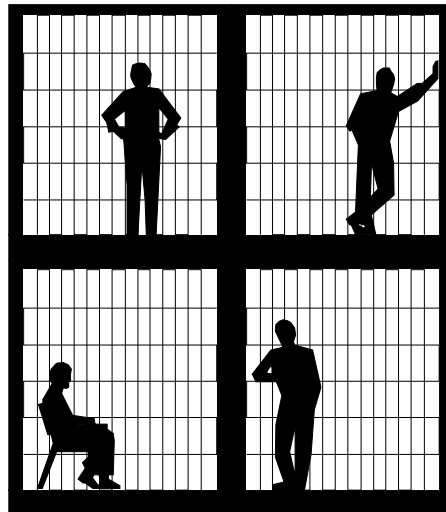
Growing interest in environmental issues led to the following changes in United States governmental laws and policies:

- **Wilderness Act (1964)** - its goal was to set aside “an area where earth and its community of life are untrammelled [undisturbed] by man.”
- **Environmental Protection Agency (1970)** - independent agency of the United States government responsible for protecting and maintaining the environment by seeking to control and lessen pollution from radiation, pesticides, and noise.

After the assassination of President Kennedy, **Lyndon B. Johnson**, the Democratic Vice-President, became the country's new leader. President Johnson launched some domestic policies called the **Great Society**. One of these important domestic programs was the **War on Poverty**, an attempt to banish the cycle of poverty inherent from one generation to the next. Various programs and services such as **Head Start, Job Corps, College Work Study**, etc., were put into place to help the poor receive more education and acquire skills which would make them more employable. Unfortunately, the Vietnam War was still ongoing, and it exhausted a good deal of the financial resources needed to fund the War on Poverty. Johnson advocated maintaining the United States presence in Vietnam and, hence, escalated the military involvement in that country. This decision led to the downfall of his popularity, and Johnson chose not to run for re-election.

President **Richard Nixon**, a republican, served in office from 1968 until 1974. Nixon resigned from the presidency because of political scandal on August 9, 1974. He was Vice-President during Eisenhower's term in office. Kennedy defeated Nixon in the 1960 election, but Nixon eventually won the 1968 election and became President. During Nixon's presidency, the United States reached a cease-fire arrangement with Vietnam which allowed United States troops to withdraw from the war zone. Shortly after the withdrawal from Vietnam, Nixon made changes domestically by what he called "**A New Federalism**." Basically, this was an effort to shift power held by the federal government back to the local and state governments. Most of these events occurred after Nixon's re-election in 1972. Unfortunately, Nixon made some improper decisions during that election campaign and became involved in a series of criminal acts referred to as Watergate.

Watergate became a scandal that led to Nixon's resignation and jail terms for some of his associates. The House Judiciary Committee had more than one piece of evidence to begin impeachment proceedings. Nixon resigned rather than face impeachment. Watergate has been referred to as many things throughout the years. To simplify the matter, the facts are that five individuals working for Nixon's Committee to Re-Elect the President burglarized the Democratic headquarters. They may have felt this would give the Republican party (Nixon's party) insider information regarding the Democratic campaign strategies. Nixon attempted to cover up the evidence regarding the break in, and, therefore, as President, made serious constitutional and political errors in judgement. He was the first United States President ever to resign from his position.



Gerald Ford, the republican vice-president, immediately became president after Nixon's resignation. Ford had not actually been Nixon's running mate, but the elected vice-president, Spiro Agnew, had resigned before Nixon did. Nixon had to then appoint a new vice-president and chose Ford. Gerald Ford became the first president in history that the voting population did not directly elect. Ford mostly adhered to the foreign policies that Nixon had already put into motion and continued with the withdrawal of troops from South Vietnam. On the domestic front, the nation's economy was in a recession when Ford assumed the presidency. To worsen matters, shortly after entering into office, Ford granted Nixon a full pardon, which meant that no charges